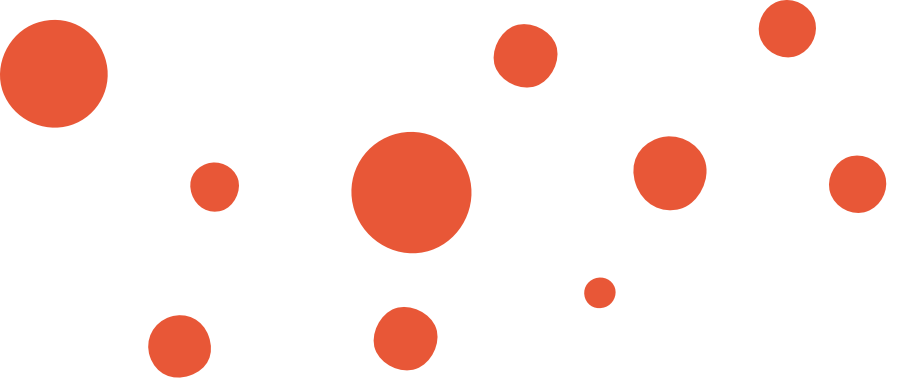




COMPANY **PROFILE**



ABOUT US

VISION & MISSION

Kamohelo Entle was founded in 2010 and duly registered with the registrar of companies in 2012. It has extensive experience in cleaning all types

of buildings such as schools, offices, industrial building (premises), hotels, shopping centres, government offices, commercial premises and hospitals, banks and others.

The employees are critical to the services we provide and we are very selective in taking on new staff. Our staff has an excellent track record and many years of experience and they are provided with regular training. The company's success lies in its ability to train and manage hundreds of staff to achieve the stringent standards demanded by the customers we serve in South Africa.

Our services include the provision of hygiene supplies, pest control, once off-specialized cleaning, office plants supplies and landscaping and garden services and chemical supplies.

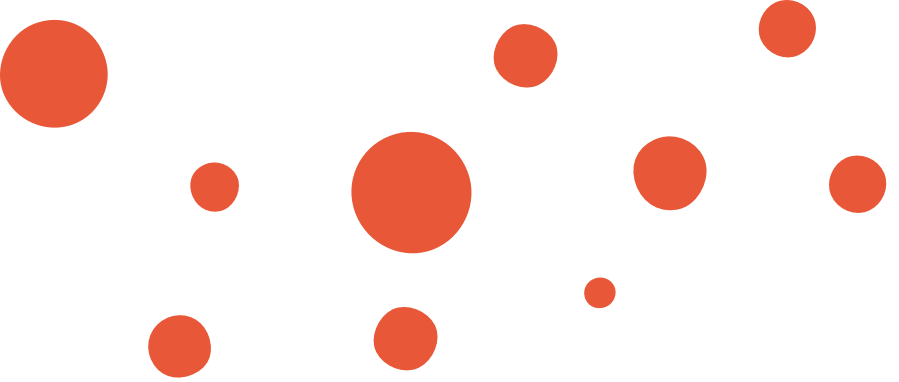
OUR VISION

Our vision is to be recognised as the most respected professional cleaning service provider and to match the current standards of cleaning in the market.

OUR MISSION

Kamohelo Entle would strive to be industry leaders in superior quality and maintenance through the latest technology and equipment. Cleaning is our core business, achieving the priority of the customers will help us grow and survive in this fiercely competitive environment. Our mission is to also achieve a reputation in the marketplace for outstanding delivery, allowing customers to judge the quality of services provided, it will always encourage, inspire and motivate our team ensuring a productive work environment.





OUR SERVICES

VISION & MISSION

HYGIENE SUPPLIES

Toilet dispensers and hand dryers
Toilet roll holders
Soap dispensers
Sanitary bins
Air fresheners and sanitizers
Consumables toilet requests (paper towels, toilet rolls, liquid hand soap)

CONTRACT CLEANING SERVICES

Day to day maintenance cleaning services of:

Hospitals
Hotels
Government offices
Industrial premises
Schools
Nursing homes
Shopping centres
Others

ONCE - OFF SPECIALIZED CLEANING

Once-off/ more periodic cleaning services:

Stripping and sealing of various floor surfaces
Pre-occupation cleans
Preparation and restoration of floor surfaces
Building exterior cleaning
Floods or fire damages
Deep cleaning of ablutions
Window cleaning

High pressure cleaning

Steam cleaning of carpets and upholstered Labour Outsourcing
We have well trained presented and competent staff for different labour demands
Permanent recruitment services.
Committed to supply the best staff.

KAMOHELO ENTLE CLEANING SERVICES STAFF COURSES

Basic Training
Basic safety
Quality insurance
Cleaning process
Vehicle cleaning
Carpet cleaning: wet extraction, stain removal, dry powder extraction
Paint rectification
Tea/ kitchen services
HIV/AIDS
Kamohelo Entle has an ongoing awareness lectures for HIV/AIDS and the topic forms part of the basic training.

EQUIPMENT AND CLEANING CHEMICALS

High standards products are used
Environmentally friendly products are used to meet environmental standards
Performance standards, reliability used and life span

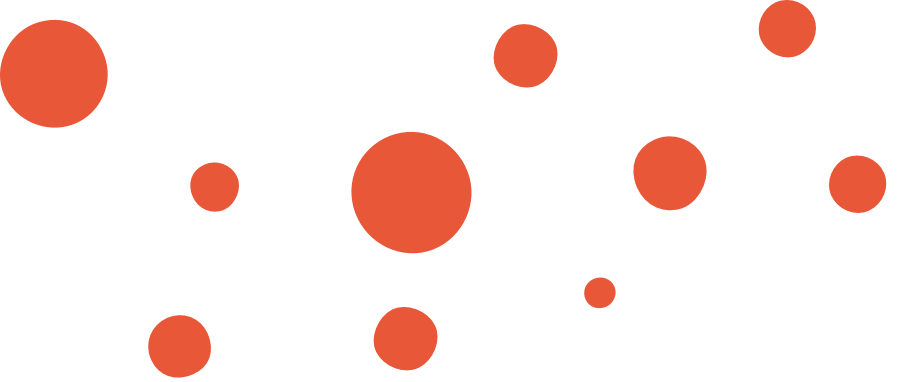
make for cost efficiency. Full product guide and specifications available on request.

CLEANING EQUIPMENTS

Soap dispenser
Cleaning machines
Brush ware
Mops
Chemicals
Cloths
Floor pads
Hand pads
Window cleaning equipments
Plastic buckets
Stainless steel (wet/dry vacuum cleaner)
Safety equipment

WHY CHOOSE US

Adherence to the occupational health and safety ACT
Fair allocation equipment to all sites
Regular site visits by senior management and area supervisors
Competence rates
Customers also have opportunity to request for customized services
Regular communications with clients
Immediate response to client's queries
Regular inspection programs
Operations



STAFF COURSE

VISION & MISSION

RESPONSIBILITIES

To maintain health, hygiene and safety
To preserve surface, finishes and fittings
To enhance image of clients organisation through our work

MANAGEMENT STRATEGY

Communicate goals and objectives
Clear detailed job specifications are set
Have regular meetings to discuss progress, reinforce team goals, give customers feedback and allow them to air their concerns.
Set high standards
Encourage mutual respect

MANAGEMENT PLAN

Quality Management

Kamohelo Entle cleaaning services will ensure that it provides quality services that adhere to the current cleaning standards.

The following schedule/ procedures will be followed:

Quaity, safety and usee friendly machinery
Regular services schedules for all machinery
Use of machinery and chemicals that adheres to international recognized standards
Staff training in safety issues, good work practises
Monitoring tools and following cleaning protocols
(TO ENSURE JUST IN TIME DELIVERY)

Proposed Area Supervisors Role
S/he will be in charge of the following:
To oversee all the activities on the site, communicate with both the clients and the management
Take register of cleaners on site
Keep services records of mchinery and inventory
Quality assurance on the site
To see that cleaning standards are met
Health and safety supervisor
Environmental policy
Records keeping





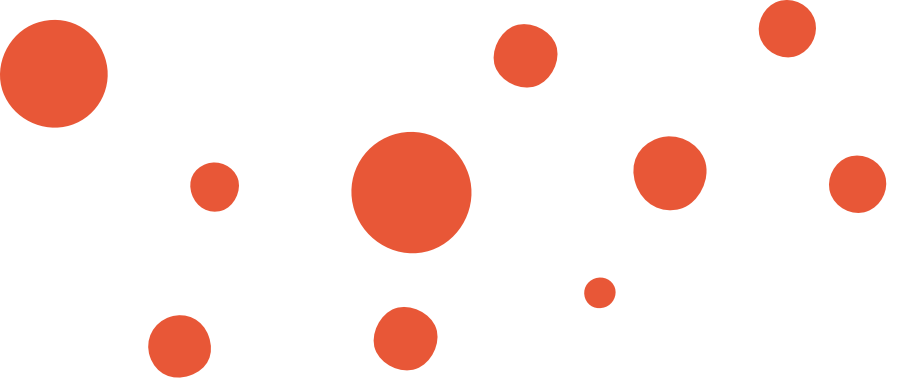
QUALITY MANAGEMENT & QUALITY ASSURANCE SYSTEM

SUPERVISION OF CLEANERS

Our cleaners are supervised by experienced and competent supervisors. The supervisors use checklist and daily duties charts. This method is highly effective as it covers all areas that need to be cleaned on a daily basis. The checklist is also used on scheduled cleaning activities for floor care, pest control and carpet and upholstery cleaning.

The cleaner's performance is also monitored by random/ surprise checks by supervisor. This method is highly effective as it keeps the cleaners on their toes to ensure that their job is done properly all the time. Performance is also used as an incentive to qualify for performance bonuses at the end of the year.





METHODOLOGY & CLEANING APPROACH

Our cleaning crew follows a very easy and efficient cleaning approach. All cleanable areas and times that the areas need to be cleaned are discussed and agreed with each cleaner before they start the cleaning contract. They are given charts of daily cleaning schedules, fully stating what needs to be done on a daily basis per area that they are assigned to. They are also given periodic cleaning schedules. These would state which areas need to be cleaned and when. For example, high windows/glazing, deep cleaning of carpets, strip and seal of floors and cleaning of upholstery. They are well trained in all areas that they are expected to perform.

Our approach is that by the time officers start work most of the cleaning inside the respective offices should be done to minimize disturbances in the offices. Our cleaning crew starts work at 06:30am.

They start with office interior following the cleaning procedure outlined (but not limited to), their daily cleaning schedules. The cleaners then move to other areas such as hallways, restrooms, kitchen and the exterior surroundings. Tea and refreshments are also served to officers as required.

Our team takes turns to break for lunch, however they ensure that by the time the officers go for lunch, they are all back from their lunch breaks to resume their cleaning. This ensures minimum disruptions to officers. Areas such as kitchen, main entrance and restrooms are cleaned frequently to ensure the highest hygiene standards.

CLEANERS

All our staff has been trained in the use of cleaning equipment and machines. We also have staff that has more intense knowledge and experience on the operation of these machines. Our machines operators can operate machines such as:

- Scrubber
- Polisher
- Burnisher
- Wet & Dry vacuum cleaner
- Industrial dry vacuum cleaner
- Floor boy

Our cleaners are also experienced in the following cleaning activities:

- Strip & Seal
- Buffing
- Carpet cleaning
- Upholstery care
- Scrubbing

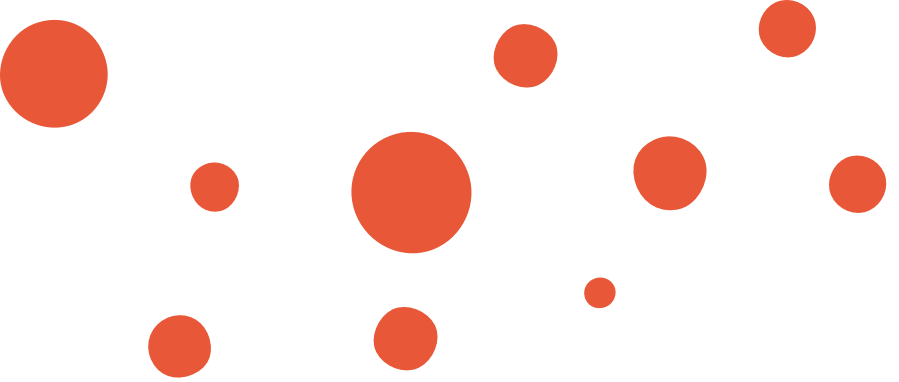
All our staff are South African citizen Training
The following training programs are offered to our staff:

Customer care- our staff is trained on customer care and the importance to our business growth. They are also taught discipline and communication skills.

INSURANCE TYPE AND COVERAGE

The company provides third party/public liability insurance, employer's liability, and workman's compensation and insurance. against loss and damage to the property.





ORGANISATION STRUCTURE





REFERENCES

PROJECT EXPERIENCE

**HERNHAM
GROUP**

**ZIMBALI
HOLIDAY HOMES**

**RM DEBT
COLLECTION
& LAW FIRM**

**KENNINGTON
LODGE**

**CEDAR
COUNTRY LODGE**



+27 81 718 9979 INFO@KAMOHELO.CO.ZA

PRETORIA
OFFICE NO. 513
JSL TOWER BUILDING
259 PRETORIOUS
STR PRETORIA
0001

CENTURION
HOLDING 79
17 MAIN ROAD
CENTURION
PRETORIA
0001

MIDRAND
16 INVICTA ROAD
THANDANI OFFICE PARK
MIDRAND
1685

WITBANK
635 CLEARWATER ESTATE
JACKAROO PARK,
BLUE ZEBRA STREET,
WITBANK/EMALAHLENI
1035